

THE ENTRY HILL & HOTH WOOD WALK

Walk Overview

Distance: 4.2 miles (6.7km)

Time: 3-3.5 hours

Description: Heading west from Mark Cross you will passthrough fields and dense woodland with some beautiful views. Crossing hilly countryside as well as lush valleys.



The Lazy Fox
Tunbridge Wells Rd
Crowborough
TN6 3NP

www.elitepubs.com/venue/the-lazy-fox
hello@thelazyfox.net
01323 690050



1. The stile after the steps



2. The field to the woods



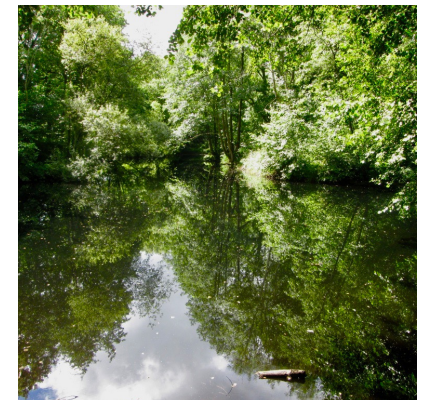
3. Ashley Road



4. Grove Wood footpath



5. Renhurst farms



6. The carp lake

Leave The Lazy Fox, turn right up the hill to the main road. Cross over the road and take the signposted footpath to the left of The Sussex Gardener. Go down the steps and continue along the path for approximately one hundred yards and over the next style. (Pic 1) Continue to the next style into the field. Head across the field to the right and the top corner and over the style into the woods. (pic2) Continue along the path through the woods and over the small wooden bridge. Continue along the path, passing the field to the right. Through the lynch gate into the field and head straight across in a westerly direction and across the next field to the lynch gate. Follow the hedge along passing Forest farm to the right. Sharp turn right and over the style by the gate. Follow the path along and down into the woods. Over the style and continue through the woods until you come up to the road.

Go just to the right and then up the track marked Entry Hill into Entry Hill Wood. Continue up passing Entry Hill House on your left continue the hill for approximately eight hundred yards. You will cross over a bridle path continue straight across into Card's Wood on the path for approximately a quarter of a mile. Track on the track on the left descending and passing the bridle path to the left. Stay on this for approximately a quarter of a mile until you come to the road. Turn right and continue along the road past the thatched cottages on the left. Continue past the thatched cottages on the left and then past Town Row Farm on the right. Continue for approximately eight hundred yards down the hill until you see a signed footpath on your left opposite Station Cottage, signposted Ashley Road. (pic3) Continue up Ashley Road.

After approximately fifty yards take the footpath beside some houses. Go across the field and take the centre gate into the next. Walking across to the right you will see a short track onto the road. Turn left up Catts Hill. Opposite Grove Wood, take the footpath by the fence. (pic.4) Continue round and left over a rickety style or through the fence. This path will bring you past St Michaels orphanage now abandoned. Follow the path across the open area and into the woods. Over the style and across the field to the road going to the left around the house. Turn right and take the entrance to Renhurst Farm. (Pic5) Continue through the farmyard, keeping to the left past the cottages up the farm track until you come to a metal farm gate. Take the footpath to the left. Past the carp lake (Pic6) and over the style into the field. Down to the bottom by the gate and straight up to the top of the next field. Over the style. Turn right onto the road and the Lazy Fox is on your left.

