



Pic 1: The footpath along the field



Pic 2: The footpath along the plant shelters in the farm



Pic 3: The footpath through the farm



Pic 4: The driveway to one of the farmhouses



Pic 5: The stile in the middle of the woods



Pic 6: The track leading past the tree

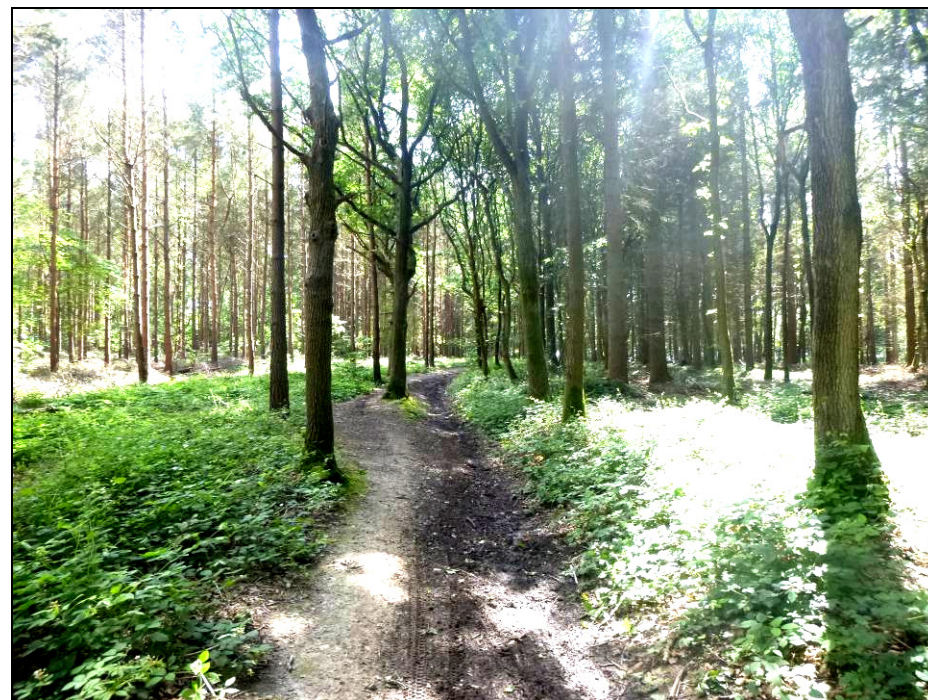
## The Abbey Wood Tour

### Walk overview:

Distance: 5 miles (8 km)

Time: 2 – 2.5 hours

Description: East and south of the Potting Shed, through and around the local woods, berry farms and countryside.



The Potting Shed  
Sutton Road  
Langley  
Maidstone, Kent  
ME17 3LZ

[www.thepottingshedlangley.co.uk](http://www.thepottingshedlangley.co.uk)  
[enquiries@thepottingshedlangley.co.uk](mailto:enquiries@thepottingshedlangley.co.uk)  
Tel: 01622 862112





Leave The Potting Shed, turn left and cross the main road A274. Turn left and keep walking along the pavement for about 0.1 miles (150m) until a 'Public footpath' signpost on the left.

*You can continue a little further until the church entrance gate if you want to see the grounds of St. Mary's church, and then return to the 'Public footpath' stone.*

Turn left onto the footpath and follow it until the field. Continue along the footpath through the field (over a concrete bridge in the middle) in the direction of the bushes ahead and then keep walking along the trail until a road.

Turn left onto the road and keep walking until a crossroad with a bigger road (Heath Rd). Cross the road and continue into Porters Walk. Keep walking straight to the end of the road and turn slightly right onto a pavement between fences. Follow it until a road, turn left onto Lacey Close and continue until a bigger road. Turn right onto it and carry on along it for about 0.25 miles (400m) until the main road. Turn right onto a pavement following the road and keep walking until a 'Public footpath' signpost on the left hand side.

Turn slightly left and follow the footpath past the metal gate and around the brickwork building until a small trail crossroad. Keep right and keep walking straight along the footpath for about 0.25 miles (400m) until a road. Cross the road and follow Pitt Road (in the direction of Chartway Street) for about 20 yards (20m) until a 'Public footpath' signpost on the right hand side. Turn right and follow the footpath through the woods for 0.5 miles (800m) until a small stream. Cross it and turn left onto a trail. Keep walking along it **(1)** for about 0.15 miles (250m) until you get to the farm area with plant shelters. Turn left and walk straight along the edge of the farm field to the corner. Cross a small wooden footbridge into another farm field. Turn right and then in front of the plant shelters turn left. Follow the edge of the field **(2)** for about 0.1 miles (150m) until the furthest corner.

Go through the bushes, onto the road, cross it and continue straight along a smaller road (follow the 'Public footpath' signpost) for about 30 yards (30m). Then turn slightly left, leave the road and follow the footpath diagonally through the fields with different types of berries **(3)** until a road. Turn left onto it and keep walking until a bigger road. Cross the road and continue straight along a track until the woods. Follow the footpath around the woods and later continue straight along the track **(4)** until a road. Turn left onto the road and keep walking for about 80 yards (80m) until a 'Public footpath' signpost on the right. Turn right onto the footpath and follow it straight for about 0.3 miles (500m) until a road.

Turn right onto the road and keep walking along it for about 100 yards (100m) until a 'Public footpath' signpost on the left. Keep left onto the footpath and keep following it until a stile **(5)**. Climb over the stile and carry on along the footpath until another stile. Climb over it and turn left onto a footpath. Keep walking along it for about 0.15 miles (250m) until a trail crossroad with a 3-stem tree in the centre. 30 yards (30m) before you reach the tree turn left onto a track. Follow the track for about 0.5 miles (800m) past the tree **(6)** until the track bears sharply left while the trail continues straight. Keep walking straight along the trail for about 0.15 miles (200m) until a T-junction with another path. Turn right onto it and follow it past the building on your right hand side until a road.

Turn right onto the road and follow it until a crossroad with Horseshoes lane. Turn left onto it (in the direction of Maidstone and Village Hall) and keep walking along the lane for about 0.4 miles (600m) until a T-junction. Turn right onto the pavement following the road (in the direction of Maidstone). Follow the pavement for about 0.3 miles (500m) until The Potting Shed on the left hand side.

