



Pic 1: The 'Public footpath' stone before the church of Saint Mary

Pic 2: The footpath along the fields and bushes



Pic 3: The footpath between the fences

Pic 4: A stile in the orchard



Pic 5: The 'Public footpath' stone in the middle of the orchard

Pic 6: The footpath through the orchards

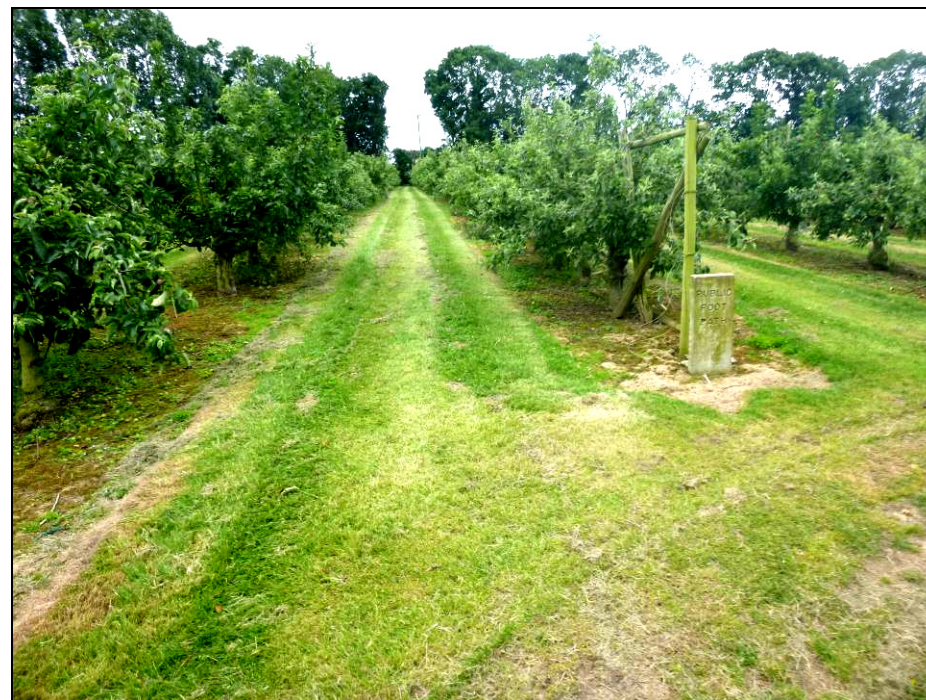
The Short Potting Shed Circle

Walk overview:

Distance: 3 miles (4.5 km)

Time: 1 – 1.5 hours

Description: Heading north of the Potting Shed, discover local orchards and what the surrounding area has to offer.



The Potting Shed
Sutton Road
Langley
Maidstone, Kent
ME17 3LZ

www.thepottingshedlangley.co.uk
enquiries@thepottingshedlangley.co.uk
Tel: 01622 862112



Leave The Potting Shed, turn left and cross the main road A274. Turn left and keep walking along the pavement for about 0.1 miles (150m) until a 'Public footpath' stone on the right **(1)**.

You can continue a little further until the church entrance gate if you want to see the grounds of St. Mary's church, and then return to the 'Public footpath' stone.

Turn right and follow the road through the metal gate. After 20 yards (20m) turn left and after another 30 yards (30m) turn right (follow the edge of the field). Carry on along the edge for about 0.3 miles (500m) to the corner of the field and climb over a stile. Keep walking along the footpath through the bushes, and after a little while keep right and walk across the concrete bridge. Continue along the footpath through the bushes into the field. Turn left and keep walking along the edge (bushes are on the left hand side and the field is on the right) until a track leading through the bushes **(2)**. Walk through the opening and keep walking along the track in the same direction (bushes are now on the right hand side and the fence is on the left). Follow the track until the metal barn and keep walking along it straight until the main road A274.

Cross the road, turn right and keep walking along the pavement for about 0.1 miles (200m) until a 'Public footpath' signpost on the left. Turn left and follow the path through the industrial yard, cross the road and continue straight along the bushes on the left hand side, until a wooden signpost with two yellow arrows. Turn left and keep walking along the bushes on the right hand side and parking area on the left. In the corner continue straight and climb over a small stile.

Follow the footpath along the edge of the field until a small fence, then go through the opening in the bushes and continue straight in the same direction (bushes are on the right hand side and field is now on the left). In the corner keep walking straight along the footpath **(3)** until a road.

Turn right and keep walking along the road for about 0.15 miles (250m) until a 'Public footpath' stone on the right. Turn right and follow the footpath until a stile **(4)**. Climb over it and keep walking straight along the edge of the orchard until another 'Public footpath' stone **(5)**. Continue straight between the rows of apple trees until the end of the orchard. Turn left and follow the bushes (soon turn left again, and soon after right) through two fields for about

0.1 miles (150m) until an opening in the bushes on the right hand side with a small wooden signpost.

Go through it and continue straight into another field. Carry on diagonally over the field to the opposite corner. Turn right and follow the footpath along the bushes into an orchard. Keep walking straight along the footpath **(6)** for about 0.25 miles (400m) until a corner. Continue straight along the trail until the road. Turn right and continue along the pavement following Horseshoes lane until a T-junction. Turn right onto the pavement following the road (in the direction of Maidstone). Follow the pavement for about 0.3 miles (500m) until The Potting Shed on the left hand side.

